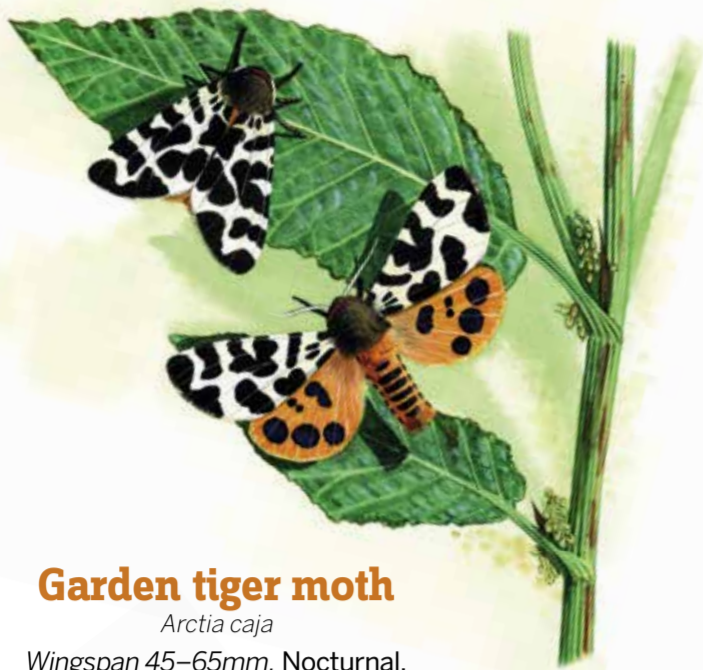


Wildlife

BRITISH POLLINATORS

Illustrations CHRIS SHIELDS Text SCOTT DUTFIELD

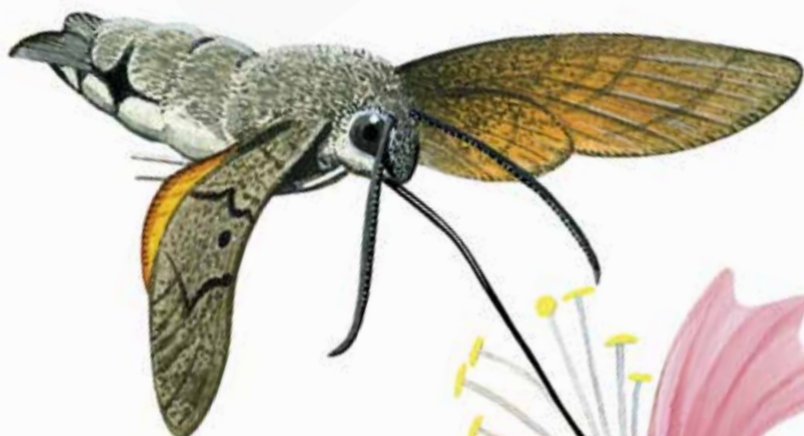
{MOTHS}



Garden tiger moth
Arctia caja
Wingspan 45–65mm. Nocturnal. Locally common in open areas. July to August.



Swallow-tailed moth
Ourapteryx sambucaria
Wingspan 40–50mm. Nocturnal. Various habitats. June to August.



Hummingbird hawkmoth
Macroglossum stellatarum
Wingspan 40–50mm. Diurnal. Common in gardens. May to September.



Elephant hawkmoth
Deilephila elpenor
Wingspan 45–60mm. Nocturnal. Often feeds on honeysuckle. May to July.



Six-spot burnet moth
Zygaena filipendulae
Wingspan 30–38mm. Diurnal. Grassland such as meadows and cliffs. June to August.

{FLIES AND BEETLES}



Red soldier beetle
Rhagonycha fulva
Length 10mm. Often feeds on hogweed and cow parsley, as well as garden flowers. June to August.



Marmalade hoverfly
Episyrphus balteatus
Length 12mm. Abundant on garden and hedgerow flowers. Nearly year-round.



Large (dark-edged) bee-fly
Bombylius major
Length 10mm. Mimics bumblebees. Often feeds on bugle and primroses. March to June.



Drone-fly
Eristalis tenax
Length 12mm. Mimics the male honeybee (drone). Abundant visitor to garden flowers. Nearly year-round.

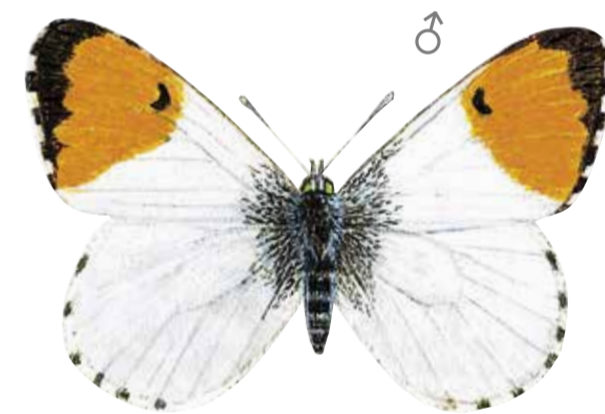


Hornet hoverfly
Volucella zonaria
Length 20mm. Mimics the hornet. Woodland and gardens. May to October.

{BUTTERFLIES}



Swallowtail
Papilio machaon
Wingspan 76–93mm. In UK, only in Norfolk Broads. May to July.



Orange-tip
Anthocharis cardamines
Wingspan 40–52mm. Common in many habitats. April to June.



Brimstone
Gonepteryx rhamni
Wingspan 60–74mm. Gardens, woodlands, scrubby grassland. June to September.



Small skipper
Thymelicus sylvestris
Wingspan 27–34mm. Rough grassy habitats with tall vegetation. June to August.



Common blue
Polyommatus icarus
Wingspan 29–36mm. Unimproved grassland habitat. May to October.



Brown argus
Aricia agestis
Wingspan 25–31mm. Chalk and limestone grassland. May to October.



Comma
Polygonia c-album
Wingspan 50–64mm. Woodlands, gardens and hedgerows. March to September.



Peacock
Aglais io
Wingspan 63–75mm. Abundant in a variety of habitats. March to September.



Small tortoiseshell
Aglais urticae
Wingspan 45–62mm. Common in many habitats. March to September.



Silver-spotted skipper
Hesperia comma
Wingspan 29–37mm. Chalk downlands; rare. July to September.



Red admiral
Vanessa atalanta
Wingspan 64–78mm. Common in many habitats. March to November.



Small white
Pieris rapae
Wingspan 38–57mm. Abundant in a variety of habitats. April to October.

{BEES AND WASPS}



Honeybee
Apis mellifera
Length 12mm. Domesticated; nests in hives and visits many habitats. March to September.



Tree bumblebee
Bombus hypnorum
Length 16mm. Found in urban areas, gardens and woods; often nests in bird nestboxes. March to July.



Red mason bee
Osmia bicornis
Length 11mm. Found in a variety of habitats; nests in old walls. March to June.



Common carder bee
Bombus pascuorum
Length 13mm. Found in a variety of habitats. March to November.



White-tailed bumblebee
Bombus lucorum
Length 22mm. Various habitats. March to November.



Tawny mining bee
Andrena fulva
Length 18mm. Found in a variety of habitats; nests in lawns. March to June.



Buff-tailed bumblebee
Bombus terrestris
Length 22mm. Found in a variety of habitats; nests underground. April to August.



Hairy-footed flower bee
Anthophora plumipes
Length 16mm. Various habitats, especially in the south. March to June.



Red-tailed bumblebee
Bombus lapidarius
Length 23mm. Found in a variety of habitats; fond of yellow flowers. March to September.



Ruby-tailed wasp
Chrysis ignita
Length 11mm. Various habitats; often seen on cliffs and dead wood. April to September.

